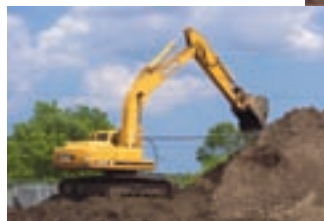


equipment



				5
--	--	--	--	---

READY TO ROLL

Digging, Loading, Hauling, Grading, Scraping, Paving, Spraying, Driving...

The range and quantity of the fleet of equipment and machinery that LCC owns is an attribute rarely seen in the landscaping industry. The variety enables the company not only to do the kind of work that they do but also to do it well and within tight time constraints.

Having equipment on hand allows crews to finish jobs more

quickly without wasting valuable time waiting for the right machines to arrive. The company dispatcher is in charge of knowing where each machine is and where it needs to go next. Additionally, LCC has the ability to move all of their equipment in-house. "If a crew needs a machine at 5 a.m. tomorrow, we make it happen," says Brian Baumgartner, Operations Manager.

Continually reinvesting in order to better serve their customers, LCC recently added to their fleet: three maintenance rigs; a specialty spray rig; and several bulldozers, skid steers

and excavators. With these additions, the company currently has over one hundred trucks, one hundred pieces of heavy equipment and thousands of pieces of smaller equipment ready to move to the next job site.

By owning and maintaining all of their own equipment, the LCC team is always ready to roll, no waiting and no delaying.



NEW DIVISIONS

In order to better serve clients and customers, LCC has added two new divisions — Turf & Tree Care and Green Building — to their list of service offerings.

The new **Turf & Tree Care** division is a branch of the Maintenance Department that focuses on fertilization, weed control and pesticide application for lawns, trees and shrubs. The team also diagnoses any problems and provides treatment to ensure the health of these materials.

Technicians are trained to look for and combat symptoms of potential problems before they become full-blown. Turf & Tree Care services are available for residential, commercial and industrial properties.

As one element of Green Building, **Green Roofs** are a growing trend in urban areas. Green Roofs are roofs of buildings that are partially or completely covered with soil and vegetation. Their purpose is to reduce heating and cooling loads, reduce stormwater run off, increase the roof life span, filter air pollutants, reduce the urban heat effect and provide functional space for a garden or patio. Increasing city regulations are moving past encouraging their use and more towards requiring them. With three levels of maintenance requirements, LCC can customize a Green Roof to fit your building's needs.

WHAT WE OFFER

LCC provides comprehensive integrated landscape services for residential and commercial properties, including:

- Landscape Maintenance & Management
- **Turf & Tree Care** *NEW!*
- Irrigation
- Site Development & Excavation
- Site Utilities
- Landscape Installations
- Water Features
- Hardscapes
- Design/Build
- General Contracting
- Ecological Restoration
- **Green Building (LEEDs, Green Roofs)** *NEW!*
- Snow Removal
- Holiday Decorating



					6
--	--	--	--	--	---

HOLIDAY RECAP

The 2006 LCC Holiday Party was great fun once again. Thanks to



everyone who came out to celebrate the season, including Skates, the Chicago

Wolves' mascot. Congratulations to Tammy Schneider for winning this year's grand prize—an all-inclusive trip for two to sunny Jamaica!

SAVE THE DATE

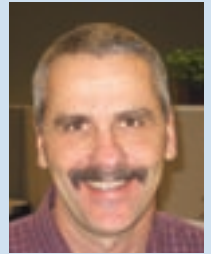
Mark your calendars now! LCC will be hosting its second annual Open House on June 28, 2007. Watch your mailbox for more details to follow.



NEW FACES

Paul Samuel

is LCC's new Residential Project Manager. With 25 years of experience working in high-end residential landscaping, he is a perfect fit with LCC. Interacting with clients and superintendents, Paul manages residential sales, sales estimates and client follow-up.



LANDSCAPE CONCEPTS CONSTRUCTION, INC.
4213 U.S. Highway 12
Richmond, IL 60071
www.LCCon.com

Presort First Class
US Postage
PAID
Algonquin, IL
Permit No. 13

VISIT
LCCon.com
FOR MORE NEWS!

Contents:

Spring Call	1
Achievements	2
Maintaining	3
Team Spotlight	4
Equipment	5
Update	6



SPRING INTO *Action*

GROW WITH US!

Stop feeling the winter blues and start thinking spring colors! The spring growing season is rapidly approaching and NOW is the time to contact the LCC maintenance team to discuss your spring and summer landscape construction and management needs.

Our crews and equipment are primed and ready to do all of your spring cleaning for you...well, the landscaping part at least. Call for top placement on our schedule. Place your summer plant orders early!

Have a new project in mind? Large or small, we can handle them all. Let us do all the work so you can sit back and enjoy the sunshine. Spring into action and give LCC a call today!

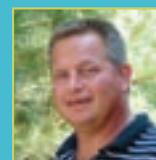
PRESIDENT'S MESSAGE

As we begin a new year in our new location, I would like to offer a challenge to you — "Challenge us." We are thankful for past opportunities to work with you and welcome new challenges for the new year. Due to the precision of our team players and fleet of equipment, as always we have the ability to meet unheard of deadlines for you.

In this issue you can read about some of our recent project accomplishments and recognitions. Meet a few people who are new to LCC and others who have been with us for

years. See the equipment that makes our jobs possible. Learn about our new divisions—Turf & Tree Care and Green Building Construction.

We are here to execute your landscape construction, maintenance and excavation challenges.



Peter DeVore, President
**LANDSCAPE CONCEPTS
CONSTRUCTION, INC.**
4213 US Highway 12
Richmond, IL 60071



"It's always a tough challenge when we have to work under a tight deadline. Rising to meet that challenge is the only option for us, and we do what it takes to get the job done."

Al Haisman, Landscape Superintendent



	2				
--	---	--	--	--	--

A GRAND ENTRANCE

Another day at Landscape Concepts Construction means another tight deadline that hard-working crews must strive to meet. In this case, it was the Grand Opening of the entrance to a new 725-unit adult community set on 300 acres in Mundelein, Illinois.

Using five crews, LCC finished the 1,000 ft. by 10,000 ft. entrance on time in only three weeks. "We completed about six weeks of work in half the time because we

had 30 to 40 dedicated guys out there putting in extra hours each day," said Al Haisman, Landscape Superintendent in charge of the ongoing project.

"Our biggest challenge was to meet the deadline, and we did it once again." LCC has become famous for exceptional quality landscaping within an ordinarily unobtainable schedule.

Thus far, the team has installed 400 evergreens, 300 shade trees and 1,000 shrubs. Additionally, they have constructed a few of the retaining walls around small retention ponds.

However, the entrance is only the beginning.

LCC has been contracted to provide excavation and landscaping services for the entire community, comprised of:

- 10 neighborhoods
- 725 single family homes
- Clubhouse
- Pond

According to Al, the project is set to be completed in the next two to three years. Judging by the company's project history, LCC will do whatever it takes to make sure they are finished on time.

TO THE EXTREME

LCC was asked by Norcon, Inc. to complete the landscaping for a home rebuilding project on Chicago's west side that was featured on ABC's Extreme Makeover: Home Edition.



As a gift to the featured family's grandmother, the crews fixed up the

exterior front of her home down the street. Donating three days of labor, the LCC team created a formal courtyard complete with brick paving, a yard for planters, and trees. It was a dramatic change to the face of the house.

To view photos from this episode, visit: abc.go.com/prime-time/xtremehome. LCC gives special thanks to Lurvey Landscape Supply for their generous donation of hard-landscape materials for this project.

BEST OF 2006

Midwest Construction magazine awarded the Kohl Children's Museum project in Glenview, Illinois with "Project of the Year" for Sustainability as well as "Award of Merit" for Cultural/Performing Arts in its "Best of 2006" list.



In partnership with Pepper Construction, LCC helped the museum earn a LEED (Leadership in Energy and Environmental Design) Silver certification. To foster environmental sustainability, LCC utilized plants that are both attractive and deep-rooted to aid infiltration and filtration. Habitat Park, a 2-acre area with children's garden and winding paths, showcases natural life.

The "Best of 2006" honors the building teams that created the best construction projects in 2006.

LM BIG 100

For the fifth year in a row, LCC was named to Landscape Management magazine's list of the Big 100 landscape contractors by sales revenue nationwide. The team earned the #20 spot on the 2006 list. For the complete list and articles, visit landscapemanagement.net.



According to the LM staff, companies on this year's list are there because, "They're committed to profitable growth, expanding their operations and getting their names known in their service areas...they all realize the importance of being market leaders."

maintaining



PART OF THE PACK

Not only is LCC one of the six featured corporate sponsors for the Chicago Wolves hockey team,



they are the landscape company of choice at the team's home office in Glenview, Illinois.

Due to their reputation of excellence, LCC was chosen to create a basic maintenance program and provide ongoing management support on a 12-month contract for the office property.

During spring and summer months, crews provide weekly grounds maintenance that includes lawn care, fertilization, mulching and seasonal planting rotations. A unique feature of

the property is a section of native prairie plants that receives special consideration and management. In the winter months, LCC is contracted to perform snow plowing and removal services on a zero tolerance basis.

Landscape Concepts Construction is proud to be a part of such a great team organization. Come out to Allstate Arena in Rosemont, Illinois on February 24 for **LCC Night at the Wolves** game. The first 5,000 people through the doors will receive a free LCC gift!



Curtis Depner,
Maintenance Director

PUT SOME SPRING IN YOUR STEP!

Do you want to be on the top of the list? If so, it is time to sign and renew contracts for the upcoming spring and summer maintenance seasons. Priority positioning on the schedule is on a first come, first serve basis.

LCC offers complete services to have properties ready for the spring growing season. Spring maintenance services include:

- Clean-up to remove debris and late fall leaves, repair winter plow damage and cutback winter perennials
- Turf thatching and core aeration to pull up dead grass and ensure a healthy lawn
- Mulching around trees and in planting beds

- Irrigation system start-up
- Spring planting of pansies, a cool season annual

"The spring season is also the time to order summer annuals and create planting diagrams," says Maintenance Director Curtis Depner. "In fact, if summer annuals orders are placed by April 1, customers will receive a 5% discount on their order."

When summer arrives and plant life is in full bloom, the LCC team of professionals works hard to maintain the health and beauty of your property. Through weekly services including mowing, weeding, mulching, fertilizing, pest monitoring and pruning—lawns, trees, shrubs and flowers of all kinds are in good hands. With their own fully-stocked

nursery yard, LCC also can provide tree and shrub replacement if required.

Don't wait until spring has sprung! Whether a commercial or



residential property owner, it is time to contact the LCC maintenance team to set-up spring and summer service schedules. The exceptional crews at LCC are ready to transform your landscape from winter doldrums into spring delight!

team spotlight



Left to right:
Gene Brown;
Jay Stark;
Al Haisman;
Patti Lopatowski

LCCOn.com

			4		
--	--	--	---	--	--

WHAT DO CLP AND CLT MEAN?

Through the Professional Landcare Network (PLANET), LCC encourages team members to become Certified Landscape Professionals (CLP) and Certified Landscape Technicians (CLT). Certification is a national hands-on testing program that recognizes proficiency in the landscape workforce. The individuals who voluntarily test for certification and pass demonstrate a high level of competence and dedication.



CLP is a designation for business owners or managers who meet education/experience requirements and pass a five-part written exam. The content of the test covers a broad range of business topics that include planning, accounting, management, risk, law, contracts, sales, marketing, communications, health, safety, human resources, operations and horticulture. The purpose of this test is to raise the standards of the landscape profession.



CLT testing is geared toward field practitioners, such as crew leaders and technicians. Candidates must demonstrate safe and proper use of equipment and handling of materials and must pass all the Common Core problems as well as the challenges in a chosen specialty area – installation or maintenance. Certification sets a benchmark of skills development in the landscape industry.

Gene Brown,

Tree and Shrub Specialist

Since 1997 Gene has built experience working in the green industry. He joined the LCC team in July 2006 as an Account Representative for the Maintenance Department. In his current position, Gene is in charge of the fertilization and integrated pest management (IPM) programs for the Turf & Tree Care division. From sales to technician training to physical application, he is committed to the growth of his division. Studying to be a Certified Landscape Technician (CLT), Gene has only two tests left to complete his certification.

Jay Stark,

Director of Business Development

With 23 years of business development experience in the leasing and finance industry, Jay joined the team in June 2006 to establish a Business Development office. In his position, he networks with residential and commercial developers in Northern Illinois and Southern Wisconsin to build the client base for LCC while maintaining relations with current clients and vendors. Active in the community, Jay manages the public relations for the company. He recently tested for his CLP certification.

Al Haisman,

Landscape Superintendent

For three years, Al has been an LCC Landscape Superintendent. He came onboard with 23 years of experience in the landscaping business and has been a great asset to the team of super superintendents. Al currently supervises the landscape development for a large adult community and dedicates many hours on the job to keeping his crews on track to meet their deadlines. He also is studying to earn his CLP certification.

Patti Lopatowski,

Administrative Assistant-Estimating/Sales

Patti has been a dedicated LCC team member for nine years and has worked in the construction industry for a total of twenty years. At LCC, she is the sales team's assistant who handles all of the pre-sales job duties. During any given day, Patti can be found preparing bids, securing plans, obtaining city licenses and updating bid calendars. Assisting three different team members, Patti has a knack for keeping each individual's preferences in mind when completing her work.